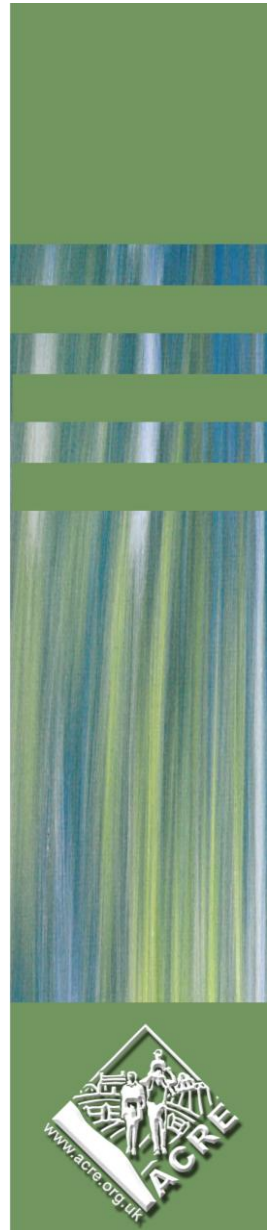


Deprived rural areas in Cambridgeshire

Final Report v1.1

March 2011





About the Evidencing Rural Need resource

Evidencing Rural Need

Evidencing Rural Need is a new resource that shows the real picture of socio-economic issues across rural areas of England, and will enable organisations to influence decisions about policies and services more effectively. Building on the pioneering work with the Rural Community Action Network, ACRE commissioned Oxford Consultants for Social Inclusion (OCSI) to further develop a set of the reports for all rural areas across England.

Evidencing Rural Need comprises a series of reports, prepared for a range of geographies, initially highlighting the incidence of deprivation in rural communities throughout England but now including the rural economy and access to services. Although there is a great deal of data available for villages, hamlets and smaller towns, this information has not been brought together so succinctly in a single resource for all settlements in rural England.

The reports are available through RCAN members but the full range and background information can be viewed at www.rural-evidence.org.uk.

Acknowledgements

For their valuable help with the Evidencing Rural Need project, ACRE would like to thank the members of the steering group:

- Julie Bowers (Rural Action East Midlands)
- Jon Clemo (Norfolk RCC)
- Peter Harding (Community Council of Devon)
- Michael Hunt (Community Impact Bucks)
- Simon Kiley (Action in Rural Sussex)
- Richard Quallington (Community First)
- Roger Roberts (Action with Communities in Cumbria)
- Jean Roberts-Jones (Surrey Community Action)
- Linda Watson (Oxfordshire RCC)
- Stephen Wright (South West ACRE Network)

ACRE would also like to thank DEFRA for their support and provision of Ordnance Survey data and licensing, OS license number 100022861.

©ACRE/RCAN/OCSI 2011. This report, or any part thereof, may be reproduced in any format or medium, provided that is reproduced accurately and not used in a misleading context. The source of the material must be identified and the title of the publication specified with the copyright status acknowledged.

Oxford Consultants for Social Inclusion (OCSI)

Address 15-17 Middle St, Brighton, BN1 1AL
Tel: +44 1273 201 345
Email: info@ocsi.co.uk
Web: www.ocsi.co.uk

1 Introduction

Background

The Coalition government has emphasised the importance of greater local influence on services and decisions¹. Although it is not yet clear how (and at what level) this influence will operate in practice, robust evidence can help partners demonstrate the importance of rural issues to local authorities, local enterprise partnerships and other service commissioners operating in a climate of scarce resources.

Where are the most deprived rural areas?

Identifying pockets of deprivation in rural areas requires data at very small area level. Key deprivation datasets, including the Index of Multiple Deprivation, are now available at Lower Super Output Area (LSOA) level. LSOAs on average cover 1,500 people, so this information is more detailed than previous data available at the larger ward level. We have analysed the Index of Multiple Deprivation at LSOA level, to identify the most deprived rural areas in Cambridgeshire based on nationally-published data.

However, many settlements in rural areas are considerably smaller than the average 1,500 people in a single LSOA, so an LSOA may cover several small settlements which may be very different from each other². In other words, it can be difficult to identify smaller pockets of deprivation in rural areas using the Index of Multiple Deprivation and other datasets at LSOA level, as small highly deprived areas can be surrounded by more affluent areas.

Unfortunately, there is little deprivation data published nationally below LSOA level. The Census 2001 data is the main source for the smaller Output Area (OA) data, although local and national partners may hold important information

¹ For example, see the 2011 Decentralisation Localism Bill.

² Due to lower population densities in rural areas, rural LSOAs are geographically larger than urban LSOAs in order to cover the same population. The largest LSOA in England covers over 68,300 hectares. The smallest, covers 1.8 hectares.

at unit postcode and household level. In work with Norfolk Rural Community Council and the Commission for Rural Communities³, we have statistically modelled key deprivation datasets down to Output Area level⁴.

We have explored these modelled datasets at Output Area level, to examine rural deprivation issues at a finer level of detail than previously possible.

The geographies

Lower Super Output Areas (LSOAs): LSOAs were developed for the Census 2001. Each LSOA contains roughly 1,500 people, and there are 32,482 LSOAs across England and 365 across Cambridgeshire.

Output Areas (OAs): OAs are the smallest unit for which data is usually published. On average, Output Areas have a population of 300 people, and (on average) five Output Areas make up a single LSOA. There are 165,665 OAs across England and 1,820 across Cambridgeshire.

What does this rural share report contain?

The sections in this report cover the following themes.

- Where are the most deprived areas at *Super Output Area* level?
- Where are the most deprived areas at the detailed *Output Area* level?
- What are highly deprived rural areas like?
- How does deprivation compare across different domains?
- Methodology and indicators; Definitions of rural (Appendices A and B).

³ OCSI (2008); *Deprivation in rural areas: Quantitative analysis and socio-economic classification report for Commission for Rural Communities*, available from www.ruralcommunities.gov.uk/publications/deprivationquantitativefullreport.

OCSI (2006), *Deprivation in Rural Norfolk*, from www.norfolk.gov.uk/ruraldeprivation

⁴ The modelled datasets for all Output Areas across England are freely available online, with separate files for each of the English regions. For further details, and the datasets, see www.ocsi.co.uk/ruraldeprivation

2 Where are the most deprived areas at *Super Output Area* level?

The most deprived areas in rural Cambridgeshire at LSOA level

The Index of Multiple Deprivation 2007 (IMD 2007) is the Government’s official measure of multiple deprivation at small area level.

The table below shows the five most deprived rural LSOAs in Cambridgeshire on the IMD 2007⁵. The IMD rank ranges from 1 (the most deprived area in England) to 32,000 (the least deprived). The IMD decile identifies whether each area is in the most deprived 10%, 10-20%, 20-30% and so on.

The most deprived areas in rural Cambridgeshire, based on the Index of Multiple Deprivation 2007		
LSOA Code	IMD Rank	IMD Decile
Elm and Christchurch E01018068	6,915	20-30%
Parson Drove and Wisbech St Mary E01018091	7,981	20-30%
Roman Bank E01018097	9,862	30-40%
Parson Drove and Wisbech St Mary E01018090	11,333	30-40%
Littleport West E01018046	11,954	30-40%

- The most deprived rural area in Cambridgeshire is Elm and Christchurch E01018068. Elm and Christchurch E01018068 is ranked 6,915 across England as a whole (where 1 is most deprived) and is ranked among the most deprived 30% of areas across the country.
- 2 rural LSOAs in Cambridgeshire are ranked among the most deprived 30% in England as a whole (1.1% of all rural LSOAs in Cambridgeshire).

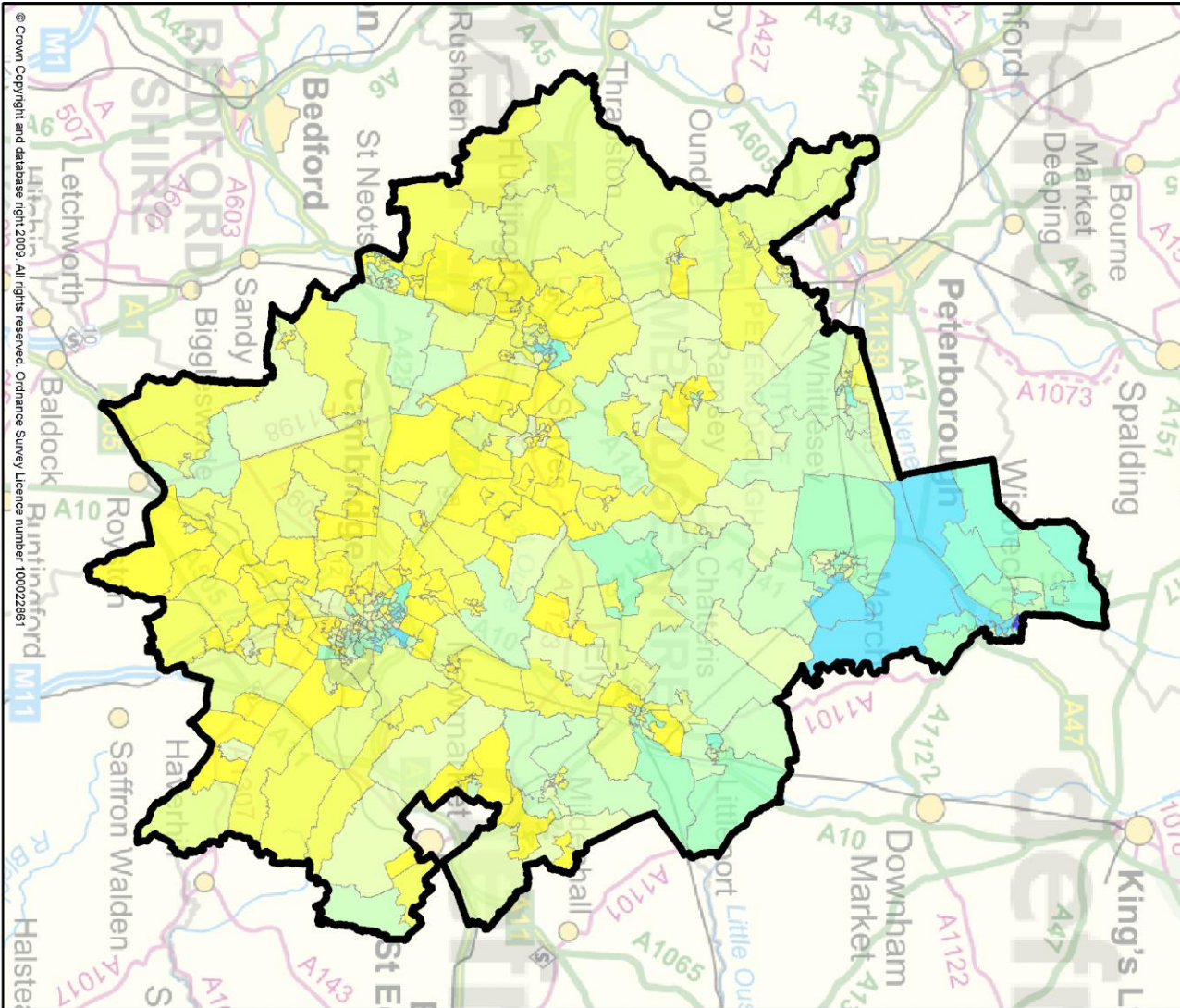
Where are the most deprived rural areas in Cambridgeshire?

The map on the following page shows the Index of Multiple Deprivation 2007 in Cambridgeshire. Areas shaded blue are ranked among the most deprived areas in the country, while areas shaded yellow are ranked among the least deprived areas.

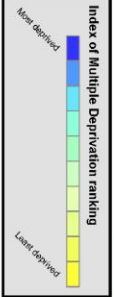
⁵ Additional tables showing the most deprived rural areas in Cambridgeshire on the seven *domains* of deprivation (income, employment, health and disability, education and skills, barriers to housing and services, crime, and the living environment) are provided in Appendix A.

Index of Multiple Deprivation (IMD) at Super Output Area (LSOA) level in Cambridgeshire.

Cambridgeshire County: IMD ranking at LSOA level



© Crown Copyright and database right 2009. All rights reserved. Ordnance Survey Licence number 100022881



LSOAs are Super Output Areas, a statistical geography developed for the Census

Source: 2001 Census Output Area boundaries, Crown Copyright.

The colours on this map show 'National level' deciles, based on the ranking of areas across England

Source: Indices of Deprivation (ID) 2007, CLG, Crown Copyright.

Crown Copyright material is reproduced with the permission of the controller of HMSO

Produced by Oxford Consultants for Social Inclusion, www.ocsisi.co.uk, March 2010

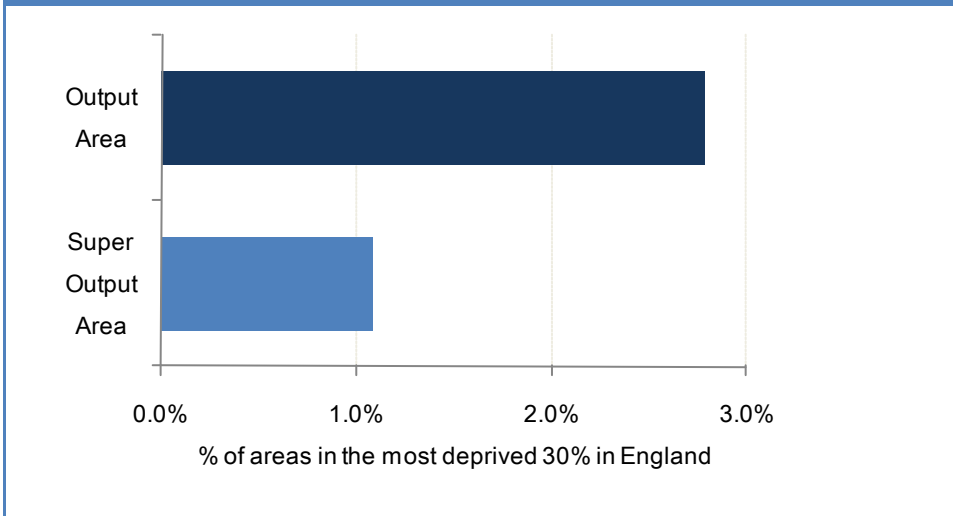


3 Where are the most deprived areas at the more detailed *Output Area* level?

The Index of Multiple Deprivation Output Area model

In order to address the lack of data with which to identify pockets of deprivation in rural areas, we have statistically modelled key datasets to Output Area level and used these to examine rural deprivation issues at a finer level of detail than previously possible⁶. The chart compares the proportion of rural areas (Output Area and Super Output Areas) that are defined as deprived.

The proportion of rural OAs and LSOAs in Cambridgeshire ranked among the most deprived 30% in England



Source: OCSI (2010) from IMD 2007

The chart shows that a higher proportion of rural areas are ranked among the most deprived 30% in England using Output Area definitions, compared with Super Output Area definitions. 1.1% of rural areas are ranked among the most deprived 30% at LSOA level; while analysis at OA level reveals that 2.8% of rural Output areas are ranked among the most deprived 30% in England.

The table below shows the Index of Multiple Deprivation at the more detailed Output Area identifying the five most deprived Output Areas in Cambridgeshire on the IMD 2007.

Index of Multiple Deprivation at Output Area level – Most deprived areas in Cambridgeshire		
OA Code	IMD OA Rank	IMD OA Decile
Gransden and The Offords 12UEGW0012	12,531	0-10%
Roman Bank 12UDGX0014	17,138	10-20%
Medworth 12UDGT0005	18,013	10-20%
Elm and Christchurch 12UDGJ0004	19,973	10-20%
Bassingbourn 12UGGZ0002	20,889	10-20%

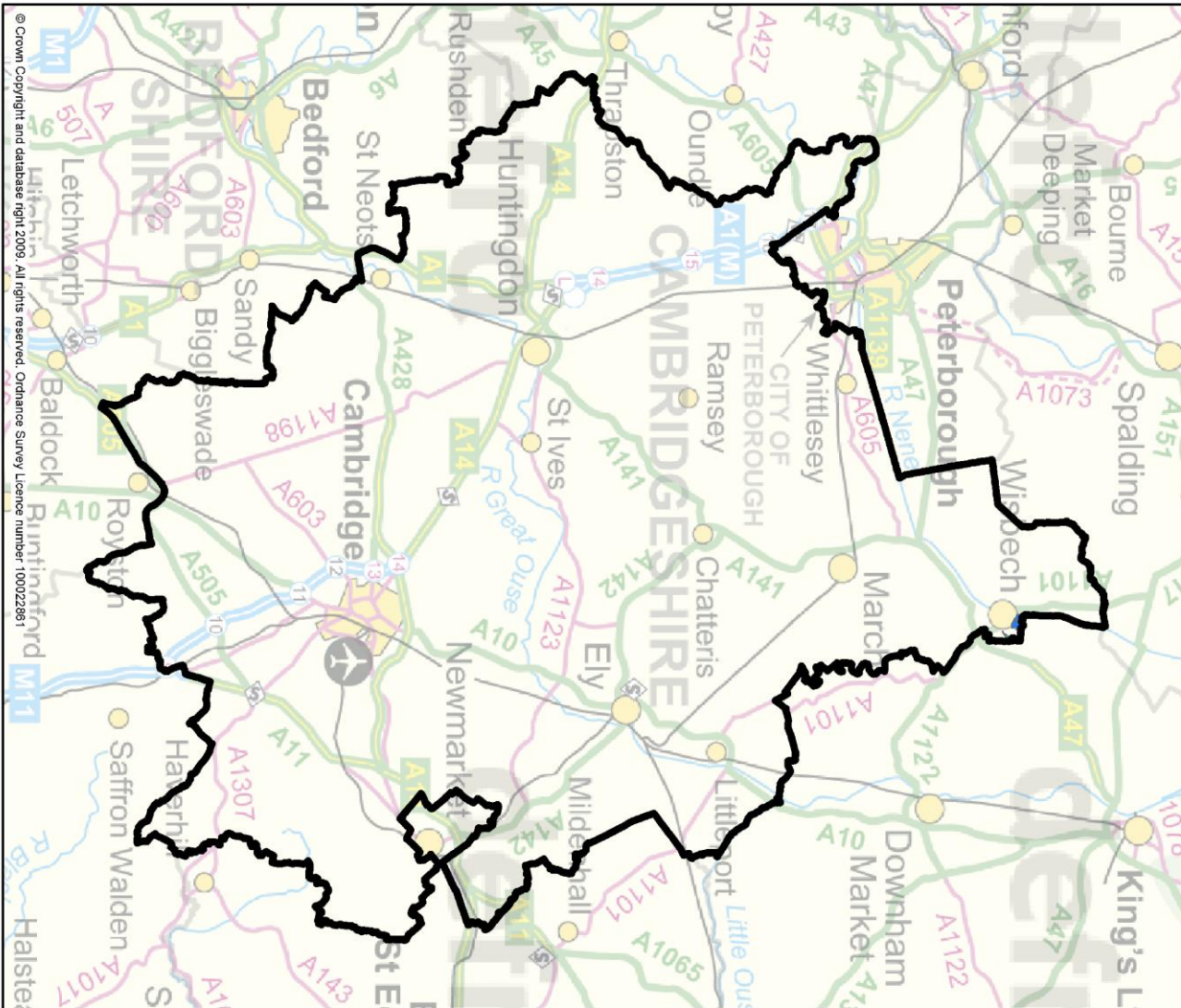
The most deprived Output Area in Cambridgeshire is Gransden and The Offords 12UEGW0012. This area is ranked among the most deprived 10% of areas across England as a whole. There are 26 rural Output Areas in Cambridgeshire ranked among the most deprived 30% of areas in England (2.8% of all rural areas in Cambridgeshire).

The two maps on the following pages show highly deprived areas at small area level across Cambridgeshire. Map 1 shows those Lower Super Output Areas (LSOAs) that are ranked among the most deprived 20% in England using the Index of Multiple Deprivation, while Map 2 shows Output Areas (OAs) that are similarly ranked as among the most deprived areas across England (based on OCSI estimates of the Index of Multiple Deprivation to Output Area level). Areas shaded dark blue are those in the most deprived 10% of areas across England, and areas shaded light blue are those in the most deprived 10-20% of areas (note that if there are no such deprived areas, the maps are left unshaded.)

⁶ OCSI (2006), *Deprivation in Rural Norfolk*, from www.norfolk.gov.uk/ruraldeprivation

Lower Layer Super Output Areas in Cambridgeshire ranked among the most deprived 20% in England

Cambridgeshire County: IMD hotspots at LSOA level



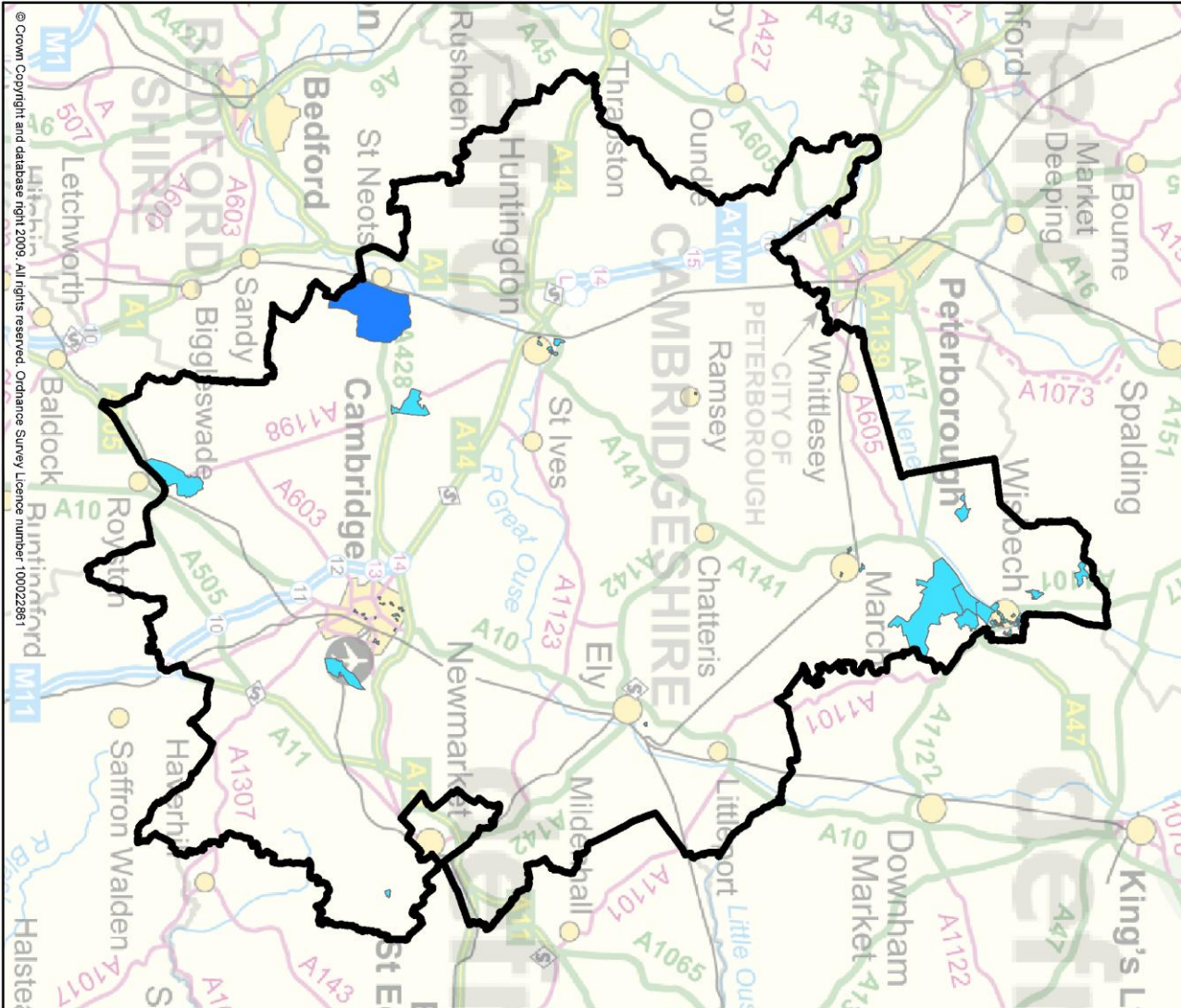
IMD hotspots at LSOA level
 Most deprived 10% LSOAs in England
 Most deprived 10-20% LSOAs in England

LSOAs are Super Output Areas, a statistical geography developed for the Census
 Source: 2001 Census Output Area boundaries, Crown Copyright.
 The colours on this map show 'National level deciles', based on the ranking of areas across England
 Source: Indices of Deprivation (ID) 2007, CLG, Crown Copyright.
 Crown Copyright material is reproduced with the permission of the controller of HMSO
 Produced by Oxford Consultants for Social Inclusion, www.ocsii.co.uk, March 2010



Output Areas in Cambridgeshire ranked among the most deprived 20% in England

Cambridgeshire County: IMD hotspots at OA level



© Crown Copyright and database right, 2009. All rights reserved. Ordnance Survey Licence number: 100022891

IMD hotspots at OA level
 Most deprived 10% OAs in England
 Most deprived 1-20% OAs in England

OAs are Output Areas, a statistical geography developed for the Census
 Source: 2001 Census Output Area boundaries. Crown Copyright.
 The colours on this map show 'National level deciles', based on the ranking of areas across England
 Source: Indices of Deprivation (ID) 2007; ODPM. Crown Copyright. OCSI modelled estimates 2006
 Crown Copyright material is reproduced with the permission of the controller of HMSO
 Produced by Oxford Consultants for Social Inclusion. www.ocsocial.co.uk, March 2010



What are highly deprived rural areas in Cambridgeshire like?

The table opposite identifies key indicators (both numbers and percentage rates are provided) for the 10 most deprived rural hotspot Output Areas in Cambridgeshire, as well as all rural areas, and all areas in Cambridgeshire.

The most deprived rural areas in Cambridgeshire are characterised by:

- High levels of unemployment: 3.4% of the economically active population are unemployed, compared with 1.9% across all rural areas and 2.1% across Cambridgeshire as a whole.
- High levels of limiting long-term illness: 27.5% of people in deprived rural areas have a limiting long-term illness, compared with 14.1% across all rural areas and 14.6% across Cambridgeshire as a whole.
- High levels of adults with no qualifications: 43.1% of all those aged 16 to 74, compared with 24.5% across all rural areas and 24.1% across Cambridgeshire as a whole.

Key indicators	Cambridgeshire - deprived rural hotspots		Cambridgeshire - Rural		Cambridgeshire	
	N	%	N	%	N	%
Household composition						
Single pensioner households	105	56.8%	13,265	53.8%	28,570	56.4%
Lone parent households	50	18.0%	4,035	11.6%	9,615	14.8%
Housing type and tenure						
Owner occupied	370	39.9%	84,800	76.3%	158,185	71.0%
Social housing	375	40.9%	14,290	12.9%	34,985	15.7%
Private-rented housing	115	12.5%	7,415	6.7%	20,415	9.2%
Overcrowded	80	8.6%	3,180	2.9%	11,515	5.2%
Housing with no central heating	85	9.0%	4,210	3.8%	10,670	4.8%
Employment and worklessness						
Unemployed people	60	3.4%	3,785	1.9%	8,560	2.1%
Economically inactive people	765	44.3%	52,555	26.0%	121,450	29.9%
Education and skills						
Adults with no qualifications	740	43.1%	49,545	24.5%	98,160	24.1%
Adults with degree qualification+	205	11.8%	45,880	22.7%	102,530	25.2%
Health and disability						
Limiting long-term illness	645	27.5%	39,170	14.1%	80,770	14.6%
People providing unpaid care	230	9.7%	26,790	9.6%	50,675	9.2%
Access to services						
Households with no car/ van	240	26.0%	12,920	11.6%	39,975	17.9%

Source: OCSI 2011, Census 2001

4 How does deprivation compare across different domains?

The most deprived LSOAs by domain

The tables below show the most deprived five rural LSOAs in Cambridgeshire on each of the seven domains of the Indices of Deprivation (ID) 2007:

- Income
- Employment
- Health and disability
- Education and skills
- Barriers to housing and services
- Crime
- Living Environment

In each table, the IMD rank ranges from 1 (the most deprived area in England) to 32,000 (the least deprived). The IMD decile identifies whether each area is in the most deprived 10%, 10-20%, 20-30% and so on.

ID 2007 Income domain - most deprived rural areas in Cambridgeshire			
LSOA Code	IMD Score	IMD Rank	IMD Decile
Littleport West E01018046	21.2%	8,373	20-30%
Parson Drove and Wisbech St Mary E01018090	20.1%	8,983	20-30%
Elm and Christchurch E01018068	19.9%	9,082	20-30%
Parson Drove and Wisbech St Mary E01018091	18.5%	9,951	30-40%

ID 2007 Employment domain - most deprived rural areas in Cambridgeshire			
LSOA Code	IMD Score	IMD Rank	IMD Decile
Parson Drove and Wisbech St Mary E01018090	12.5%	9,098	20-30%
Roman Bank E01018097	12.1%	9,611	20-30%
Parson Drove and Wisbech St Mary E01018091	12.0%	9,707	20-30%
Papworth and Elsworth E01018278	11.2%	10,851	30-40%
Parson Drove and Wisbech St Mary E01018092	11.1%	11,010	30-40%

ID 2007 Health and disability domain - most deprived rural areas in Cambridgeshire		
LSOA Code	IMD Rank	IMD Decile
Roman Bank E01018097	10,928	30-40%
Parson Drove and Wisbech St Mary E01018091	11,361	30-40%
Elm and Christchurch E01018068	11,614	30-40%
Parson Drove and Wisbech St Mary E01018090	12,057	30-40%
Parson Drove and Wisbech St Mary E01018092	13,364	40-50%

ID 2007 Education, skills and training domain - most deprived rural areas in Cambridgeshire		
LSOA Code	IMD Rank	IMD Decile
Littleport West E01018046	3,275	10-20%
Ramsey E01018160	4,939	10-20%
Elm and Christchurch E01018068	5,680	10-20%
Parson Drove and Wisbech St Mary E01018092	6,476	10-20%
Littleport East E01018042	7,023	20-30%

ID 2007 Crime domain - most deprived rural areas in Cambridgeshire		
LSOA Code	IMD Rank	IMD Decile
Elm and Christchurch E01018068	9,774	30-40%
Yaxley and Farcet E01018212	11,237	30-40%
Sutton E01018056	12,761	30-40%
Wenneye E01018110	12,814	30-40%
Littleport West E01018045	12,991	30-40%

ID 2007 Barriers to housing and services domain - most deprived rural areas in Cambridgeshire		
LSOA Code	IMD Rank	IMD Decile
Elm and Christchurch E01018068	365	0-10%
Downham Villages E01018020	402	0-10%
Parson Drove and Wisbech St Mary E01018091	405	0-10%
Ellington E01018125	439	0-10%

ID 2007 Living Environment domain - most deprived rural areas in Cambridgeshire		
LSOA Code	IMD Rank	IMD Decile
Elm and Christchurch E01018068	9,010	20-30%
The Wilbrahams E01018297	12,680	30-40%
The Mills E01018105	12,803	30-40%
Parson Drove and Wisbech St Mary E01018091	12,934	30-40%
Roman Bank E01018097	15,106	40-50%

Appendix A. Definitions

What do we mean by “rural”?

The data presented in this report is primarily based on data available for small areas. We have used the standard ONS/ Countryside Agency rural-urban classification to identify whether particular areas are ‘rural’ or ‘urban’.

The rural-urban classifications are available for a range of geographical scales, including Output Areas, Super Output Areas (both Lower and Middle Layer), and Wards. They are categorised into four categories:

- urban, based on all settlements over 10,000 population
- small town & fringe
- village
- hamlet & isolated dwellings

For the analysis in this project, we have combined the small town and fringe, village and hamlet & isolated dwellings categories into a single non-urban rural category. In other words, our rural area analysis is based on all areas *outside* settlements with populations of more than 10,000 people.

See www.defra.gov.uk/rural/ruralstats/rural-definition.htm for details of the various rural-urban classifications.